

# BOZEMAN

2,310 SF | 3 BEDROOMS | 2.5 BATHS | OUTDOOR LIVING | 2-CAR GARAGE

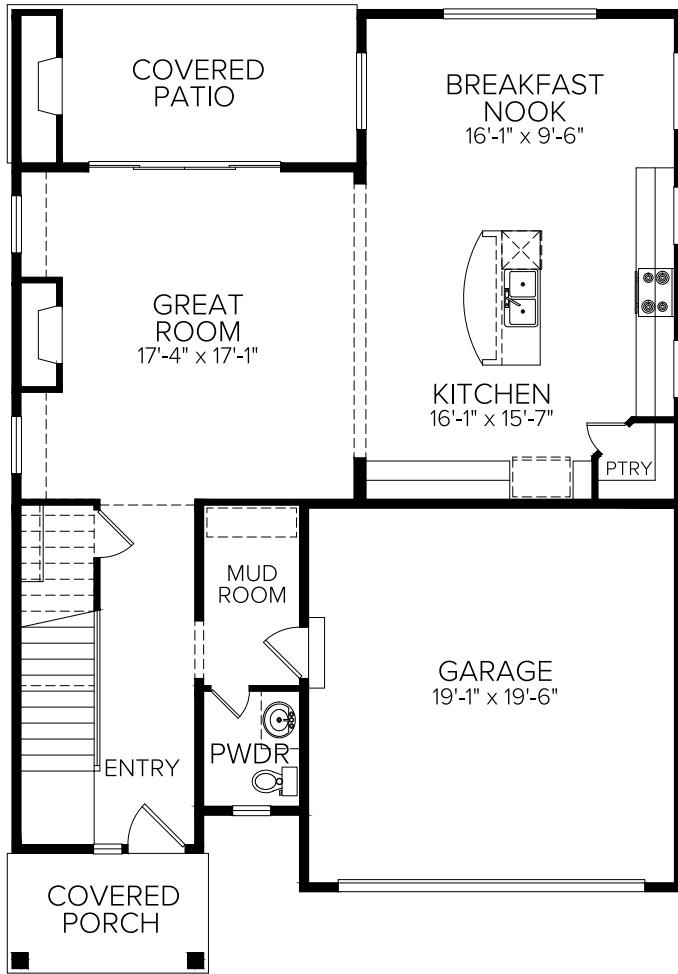


Any representation as to square footage is approximate. The square footage or floor areas shown may be more or less than the actual size and square footage of the homes. The developer/seller reserves the right to change features & amenities without notice. Renderings, illustrations, floor plans, and other information described herein are representation only, and are not intended to reflect any specific feature, home condition or view when built. The actual condition of the project, amenity or home, when and if completed, will control. No representations and warranties are made with regard to the accuracy, completeness or suitability of the information published herein.  
©2019 Azure Northwest Homes

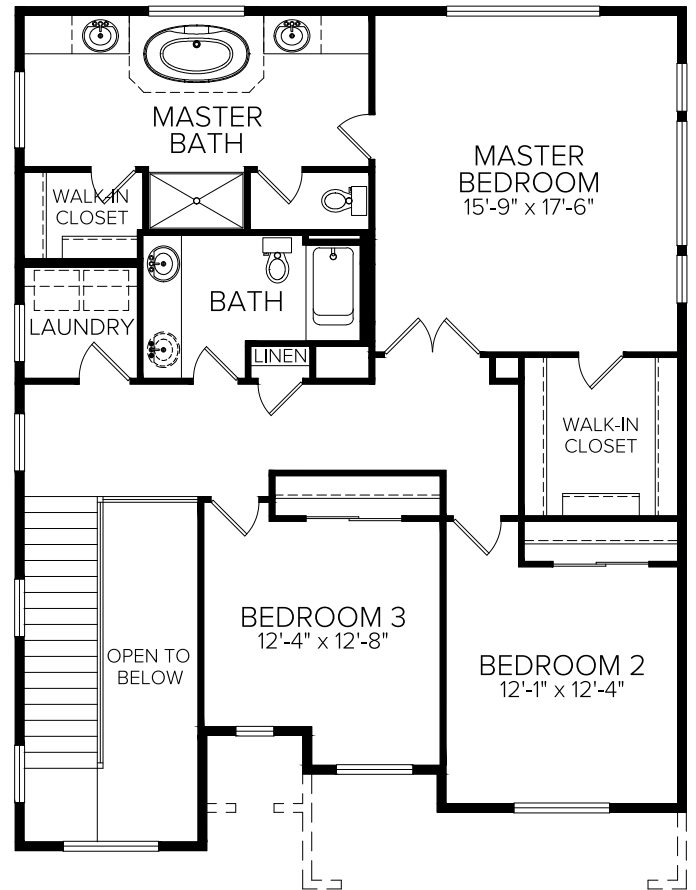


# BOZEMAN

2,310 SF | 3 BEDROOMS | 2.5 BATHS | OUTDOOR LIVING | 2-CAR GARAGE



MAIN FLOOR



UPPER FLOOR



Any representation as to square footage is approximate. The square footage or floor areas shown may be more or less than the actual size and square footage of the homes. The developer/seller reserves the right to change features & amenities without notice. Renderings, illustrations, floor plans, and other information described herein are representation only, and are not intended to reflect any specific feature, home condition or view when built. The actual condition of the project, amenity or home, when and if completed, will control. No representations and warranties are made with regard to the accuracy, completeness or suitability of the information published herein.  
 ©2019 Azure Northwest Homes

