

ASHFORD

1,485 SF | 3 BEDROOMS | 2.5 BATHS | LOFT | COVERED PATIO | 1-CAR GARAGE



tehalēh[®]
BY
NEWLAND
EAGLE RIDGE

The Ashford is a thoughtfully designed, open concept floor plan with modern finishes. The 3 bedrooms, 2.5 bathrooms, and loft are perfect for today's lifestyle. The entryway, dining room, great room, kitchen, and laundry feature soaring 9' ceilings. The kitchen includes beautiful countertops, shaker-style cabinets with soft-close mechanisms, stainless-steel appliances, and a pantry. Residents will enjoy a professionally landscaped front yard and rear yard that is fenced for added privacy.

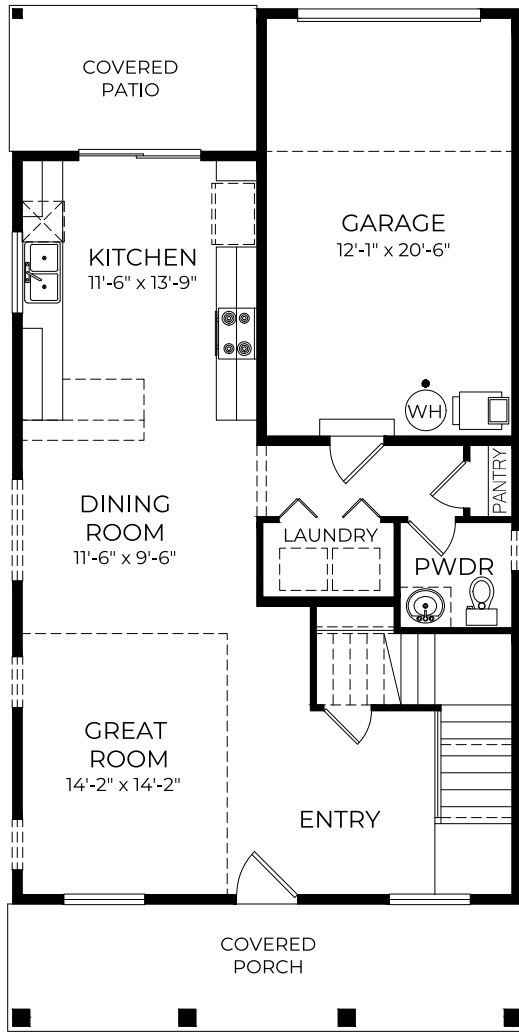


Any representation as to square footage is approximate. The square footage or floor areas shown may be more or less than the actual size and square footage of the homes. The developer/seller reserves the right to change features & amenities without notice. Renderings, illustrations, floor plans, and other information described herein are representation only, and are not intended to reflect any specific feature, home condition or view when built. The actual condition of the project, amenity or home, when and if completed, will control. No representations and warranties are made with regard to the accuracy, completeness or suitability of the information published herein.
©2022 Azure Northwest Homes

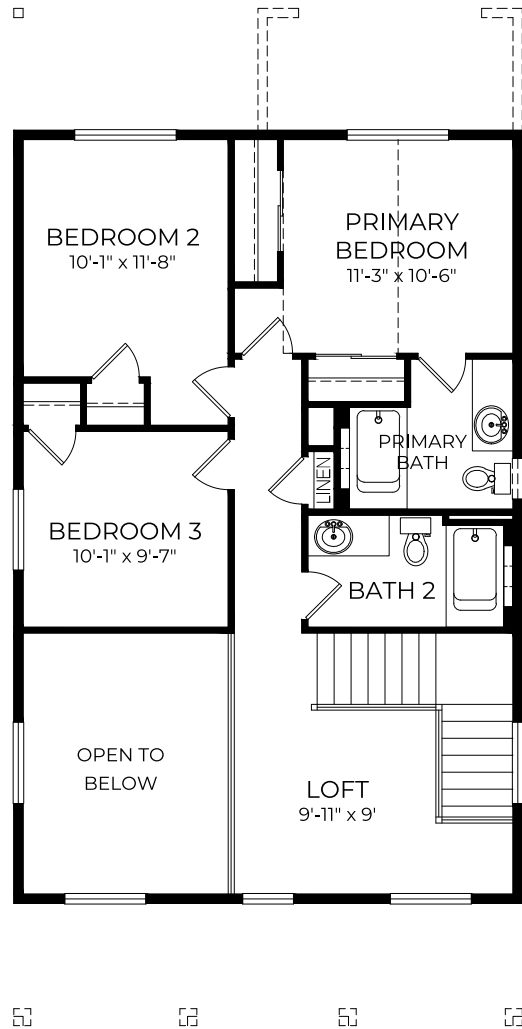


ASHFORD

1,485 SF | 3 BEDROOMS | 2.5 BATHS | LOFT | COVERED PATIO | 1-CAR GARAGE



MAIN FLOOR



UPPER FLOOR